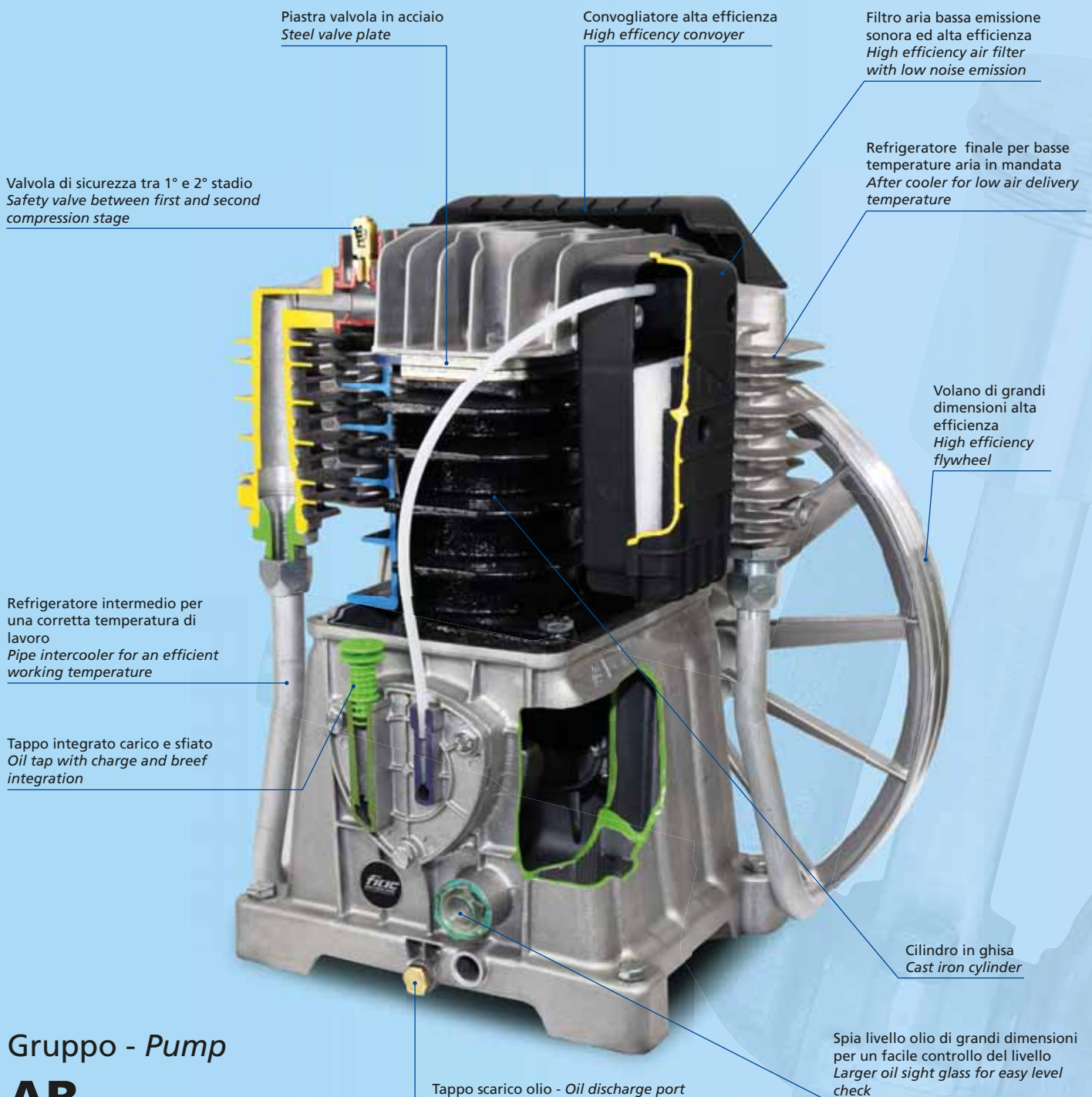


# GRUPPI COMPRESSORI D'ARIA AIR COMPRESSOR PUMPS



Gruppo - Pump  
**AB**

# Gruppi compressori d'aria **senza olio** *Oil free air compressor pumps*

F



F 130

F 114

Type	Volt/Hz	Cod.	Inlet			Pressure		Output		Cil./St.	G/1'	LxPxH	kg/lb
			l/min	CFM	m³/h	bar	psi	HP	kW				
F 114	230/50/1△	2010190000	105	3.7	6,3	8	116	1	0,75	1/1	1450	340x185x315 13.2x7.2x12.2	10 22
F 130	230/50/1△	9995490000	130	4.6	7,8	8	116	1	0,75	1/1	1700	340x185x315 13.2x7.2x12.2	10 22
F 201	230/50/1△	2013210000	205	7.3	12,3	8	116	1,5	1,1	1/1	2850	340x185x315 13.2x7.2x12.2	8 18
F 205	230/50/1△	2010120000	205	7.3	12,3	8	116	1,5	1,1	1/1	2850	340x185x315 13.2x7.2x12.2	8 18



## FB 210



Type	Volt/Hz	Cod.	Inlet			Pressure		Output		Cil./St.	G/1'	LxPxH	kg/lb
			l/min	CFM	m³/h	bar	psi	HP	kW				
FB 210	230/50/1△	2010450000	200	7	12	10	145	2	1,5	2/1	1450	490x340x180 19x13.3x7	14 31



## GMS 100



Type	Volt/Hz	Cod.	Inlet			Pressure		Output		Cil./St.	G/1'	LxPxH	kg/lb
			l/min	CFM	m³/h	bar	psi	HP	kW				
GMS 100	230/50/1△	2010501000	100	3.5	6	8	116	0,75	0,56	1/1	1450	338x180x285 13.2x6.9x11.2	11 24
GMS 105	115/60/1△	2010511000	103	3.6	6,2	8	116	0,75	0,56	1/1	1750	338x180x285 13.2x6.9x11.2	11 24
GMS 105	220/60/1△	2010551000	103	3.6	6,2	8	116	0,75	0,56	1/1	1750	338x180x285 13.2x6.9x11.2	11 24



## GMS 150

1 cilindro / 1 cylinder

Type	Volt/Hz	Cod.	Inlet		Pressure		Output		Cil./St.	€/1'	LxPxH	Weight	
			l/min	CFM	m <sup>3</sup> /h	bar	psi	HP					kW
GMS 150	230/50/1▲	2021502000	150	5.3	9	8	116	1,5	1,1	1/1	1450	345x280x340 13.5x11x13.2	17 37
GMS 180	115/60/1▲	2021702000	187	6.6	11,2	8	116	2	1,5	1/1	1750	345x280x340 13.5x11x13.2	17 37
GMS 180	220/60/1▲	2021722000	187	6.6	11,2	8	116	2	1,5	1/1	1750	345x280x340 13.5x11x13.2	17 37



## VS

2 cilindri / 2 cylinder

Type	Volt/Hz	Cod.	Inlet		Pressure		Output		Cil./St.	€/1'	LxPxH	Weight	
			l/min	CFM	m <sup>3</sup> /h	bar	psi	HP					kW
VS 204	230/50/1▲	2025203000	200	7	12	8	116	2	1,5	2/1	1450	420x320x280 16.5x12.5x11	25 55
VS 204	400/50/3▲	2025213000	200	7	12	8	116	2	1,5	2/1	1450	420x320x280 16.5x12.5x11	24 53
VS 244	115/60/1▲	2025553000	244	8.6	14,9	8	116	2	1,5	2/1	1750	420x320x280 16.5x12.5x11	24 53
VS 244	220/60/1▲✕	2025563000	244	8.6	14,9	8	116	2	1,5	2/1	1750	420x320x280 16.5x12.5x11	24 53
VS 255	230/50/1▲✕	2025700000	250	8.8	15	8	116	2,5	1,8	2/1	1450	420x320x280 16.5x12.5x11	26 57
VS 314	220/60/1▲✕	2025823000	291	10.3	17,5	8	116	2,5	1,8	2/1	1750	420x320x280 16.5x12.5x11	24 53



## STS 800

4 cilindri / 4 cylinder

Type	Volt/Hz	Cod.	Inlet		Pressure		Output		Cil./St.	€/1'	LxPxH	Weight	
			l/min	CFM	m <sup>3</sup> /h	bar	psi	HP					kW
STS 800	220-400/50/3	2025980000	800	28.2	48	10	145	5,5	4	4/1	1400	595x400x300 23.43x45.7x11.8	55 121.2
	220-400/60/3	2025970000	960	33.8	57,6								

# Gruppi compressori d'aria **lubrificati** *Lubricated air compressor pumps*

**GM**

1 cilindro / 1 cylinder



Type	Volt/Hz	Cod.	Flow			Pressure		Power		Cil./St.	RPM	LxPxH	Weight
			l/min	CFM	m³/h	bar	psi	HP	kW				
GM 110/15	230/50/1 △	2011261000	85	3	5,1	15	218	0,75	0,56	1/1	1450	335x180x280 13x6.9x11	13 29
GM 130	115/60/1 △	2011470000	130	4.6	7,8	8	116	1	0,75	1/1	1750	335x180x280 13x6.9x11	13 29
GM 130	220/60/1 △	2011220000	130	4.6	7,8	8	116	1	0,75	1/1	1750	335x180x280 13x6.9x11	13 29
GM 145	230/50/1 △	2012081000	140	4.8	8,4	8	116	1,5	1,1	1/1	2850	345x195x295 13.4x7.6x10.7	9 20
GM 175	115/60/1 △	2012060000	165	5.8	9,9	8	116	1,5	1,1	1/1	3450	335x180x280 13x6.9x11	8 18
GM 192	230/50/1 △	2012030000	190	6.7	11,4	8	116	1,5	1,1	1/1	2850	335x180x280 13x6.9x11	12 26
GM 250	115/60/1 △	2012501000	231	8.2	13,9	8	116	2	1,5	1/1	3450	331x175x295 13x6.9x11.5	13 29
GM 250	220/60/1 △	2012580000	231	8.2	13,9	10	145	2	1,5	1/1	3450	331x175x295 13x6.9x11.5	13 29
GM 244	230/50/1 △	2012770000	250	8.8	15	8	116	2,5	1,8	1/1	2850	331x175x295 13x6.9x11.5	13 29
GM 300	230/50/1 △X	2017500000	285	10	17	10	145	2,5	1,8	1/1	2850	380x190x310 14.8x7.4x12	14 31
GM 310	115/60/1 △	2017510000	285	10	17	10	145	2,5	1,8	1/1	3450	380x190x310 14.8x7.4x12	14 31



POWERED by  
**HONDA**™



**S 15**

Type	Cod.	Flow			Pressure		Power		Cil. St.	RPM	Noise	LxPxH	Weight
		l/min	CFM	m³/h	bar	psi	Type	HP					
S15 senza motore without engine	2022010000	275	9.7	16,5	10	145	-	-	S 15	1/1	-	175x210x285 6.9x8.3x11.2	5 11
S15	2022025000	275	9.7	16,5	10	145	GP 160	4	S 15	1/1	3150	75 480x390x320 18.9x15.4x12.6	15 33





## VX

2 cilindri / 2 cylinder

Type	Volt/Hz	Cod.	Inlet		Pressure		Output		Cil./St.	RPM	LxPxH	Weight	
			l/min	CFM	m³/h	bar	psi	HP					kW
VX 255	230/50/1▲	2026500000	250	8.8	15	10	145	2	1,5	2/1	1450	425x330x300 16.5x11.7x13	21 46
VX 304	230/50/1▲✕	2027002000	300	10.5	18	10	145	2,5	1,8	2/1	1450	425x330x300 16.5x11.7x13	25 55
VX 360	230/50/1▲	2027300000	300	10.5	18	10	145	3	2,2	2/1	2850	425x330x300 16.5x11.7x13	25 55

## AB 268 - AB 360 - AB 515

Monostadio / Single stage



Type	Cod.	Inlet			Pressure			Output		Cil./St.	RPM	Ø VOLANO FLYWHEEL Ø	LxPxH	Weight		
		l/min	CFM	m³/h	bar	psi	HP	kW	mm in						mm in	kg lb
AB 268	9110930000	250	8.8	15	159	5.6	9,5	10	145	2	1,5	2/1	1240	300x1A 12.8x1A	300x244x361 11.8x9.6x14.2	11 24
AB 360	9101880000	350	12.4	21	225	7.9	13,5	10	145	3	2,2	2/1	1500	300x1A 12.8x1A	350x300x400 13.8x11.8x15.8	12 26
AB 515	3020041000	400	14.1	24	280	9.8	16,8	10	145	3	2,2	2/1	1000	345x1/3V	350x300x400	12
		510	18.2	30,6	335	11.8	20,1	10	145	4	3	2/1	1280	13.58x1/3V	13.8x11.8x15.8	26

### Imballo multiplo / Multiple packaging

Type	Cod.	Imballo
AB 268	3025000000	Imballo singolo / Single packaging
AB 348	3025010000	Imballo singolo / Single packaging
AB 360	3025020000	Imballo singolo / Single packaging
AB 415 D.300-1A	3025030000	Imballo singolo / Single packaging
AB 415/515	3025040000	Imballo singolo / Single packaging

Gruppi compressori d'aria **lubrificati**  
**Lubricated** air compressor pumps

AB 525 - AB 598 - AB 678 - AB 858  
AB 998 - AB 1000 - AB 1500

Bistadio / Two stage



AB 598



AB 858



AB 1000

Type	Cod.	Icon 1			Icon 2			Icon 3		Icon 4		Cil./St.	min-1	Ø VOLANO FLYWHEEL Ø	LxPxH	kg lb
		l/min	CFM	m³/h	l/min	CFM	m³/h	bar	psi	HP	kW					
AB 525	3020060000	440	15.5	26,7	330	11.6	19,8	10	145	4	3	2/2	1280	345x15PZ	350x350x400	12
		490	17.3	29,4	380	13.4	22,8	10	145	5,5	4	2/2	1440	13.58x1-3V	13.8x13.8x15.8	27
AB 598	3021070000	540	19	32,4	405	14,3	21	10	145	4	3	2/2	1170	400x15PZ	400x330x440	17
		598	21.1	35,9	450	15.9	27	10	145	5,5	4	2/2	1270	15.8x1-3V	15.8x13x17.3	37.5
AB 678	3021100000	650	23	39	520	18.5	31,2	10	145	5,5	4	2/2	1000	400x15PZ 15.8x1-3V	400x350x500 15.8x13.8x19.7	31 68
AB 858	3021110000	830	29.3	50	640	22.5	38,5	10	145	7,5	5,5	2/2	1280	430x2A 16.9x2A	430x350x510 16.9x13.8x20	34 75
AB 998	3021080000	830	29.3	49,8	590	20.8	35,4	10	145	7,5	5,5	2/2	980	430x2A	430x350x510	37
		1070	37.8	64,2	785	27.7	47,1	10	145	10	7,5	2/2	1270	16.9x2A	16.9x13.8x20	82
AB 1000	3020600000	1050	37.8	63	840	30	50	10	145	10	7,5	2/2	1080	530x2A 20.9x2A	530x430x600 20.9x19.8x23.6	58 128
AB 1500	3020600000	1400	49.5	84	1130	39.9	67,8	10	145	15	11	2/2	1400	530x2A 20.9x2A	530x430x600 20.9x19.8x23.6	58 128
<b>Alta pressione / High pressure 14 bar</b>																
AB 598/14	3021070000	540	19	32,4	385	13.6	23,1	14	203	5,5	4	2/2	1140	400x15PZ 15.8x1-3V	400x330x440 15.8x13x17.3	17 38
AB 678/14	3021100000	510	18	30,6	360	12,7	21,6	14	203	5,5	4	2/2	780	400x15PZ 15.8x1-3V	400x350x500 15.8x13.8x19.7	31 68
AB 858/14	3021110000	650	23	39	440	15,5	26,4	14	203	7,5	5,5	2/2	1000	430x2A 16.9x2A	430x350x510 16.9x13.8x20	34 75
AB 998/14	3021080000	665	23.4	40	455	16	27,3	14	203	7,5	5,5	2/2	785	430x2A	430x350x510	37
		830	29.3	49,8	570	20,1	34,2	14	203	10	7,5	2/2	980	16.9x2A	16.9x13.8x20	82
AB 1000/14	3020600000	900	32.4	54	720	25.7	43,2	14	203	10	7,5	2/2	850	530x2A 20.9x2A	530x430x600 20.9x19.8x23.6	58 128
<b>Gruppo con controllo automatico livello olio / Pump with automatic oil level control</b>																
AB 998 AP	3021180000	665	23.4	40	455	16	27,3	14	203	7,5	5,5	2/2	785	430x2A 16.9x2A	530x350x510 20.9x13.8x20	34 75

Imballo multiplo / Multiple packaging

Type	Cod.	
AB 525	3025050000	Imballo singolo / Single packaging
AB 598	3025500000	Imballo singolo / Single packaging
AB 678	3025530000	Imballo singolo / Single packaging
AB 858	3025550000	Imballo singolo / Single packaging
AB 998	3025570000	Imballo singolo / Single packaging
AB 1000-1500	3020600000	Imballo singolo / Single packaging

### CCS

#### Basamento / Base



Type	Volt/Hz	Cod.	Flow		Pressure		Power		Grup./ Pump	Cil./St.	min-1	LxPxH		kg lb
			l/min	CFM	m³/h	bar	psi	HP				kW	mm	
CCS 268 M	230/50/1△	2030725100	250	8.8	15	10	145	2	1,5	AB 268	2/1	1240	510x310x340 20.1x12.2x13.4	26 57
CCS 360 M	230/50/1△	2031403000	350	12.4	21	10	145	3	2,2	AB 360	2/1	1500	510x330x340 20.1x13x13.4	27 59
CCS 268	400/50/3 △	2030785100	250	8.8	15	10	145	2	1,5	AB 268	2/1	1240	510x310x340 20.1x12.2x13.4	26 57
CCS 360	400/50/3 △	2031493000	350	12.4	21	10	145	3	2,2	AB 360	2/1	1500	510x330x340 20.1x13x13.4	27 59

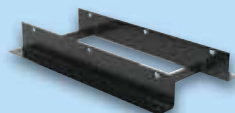
#### Basamento / Base

### ABB



Type	Volt/Hz	Cod.	Flow		Pressure		Power		Grup./ Pump	Cil./St.	min-1	LxPxH		kg lb
			l/min	CFM	m³/h	bar	psi	HP				kW	mm	
ABB 360 M	230/50/1	2031060000	350	12.4	21	10	145	3	2,25	AB 360	2/1	1450	520x360x370 20.5x14.2x14.6	29 64
ABB 360	400/50/3	2031070000	350	12.4	21	10	145	3	2,25	AB 360	2/1	1450	520x360x370 20.5x14.2x14.6	29 64
ABB 415	400/50/3	2030830000	397	14	23,8	10	145	3	2,25	AB 515	2/1	1210	570x350x370 22.4x13.8x14.6	38 83.8
ABB 515	400/50/3	2030840000	482	17	28,9	10	145	4	3	AB 515	2/1	1470	570x350x370 22.4x13.8x14.6	40 88
ABB 425	400/50/3	2030790000	440	15.5	26,4	10	145	4	3	AB 525	2/2	1280	570x350x370 22.4x13.8x14.6	38 83.8
ABB 525	400/50/3	2031090000	490	17.3	29,4	10	145	5,5	4	AB 525	2/2	1440	570x350x370 22.4x13.8x14.6	40 88
ABB 498	400/50/3	2030400000	480	16.9	28,8	10	145	4	3	AB 598	2/2	1200	760x400x520 29.5x15.8x20.5	55 121
ABB 598	400/50/3	2030410000	550	18.4	33	10	145	5,5	4	AB 598	2/2	1400	760x400x520 29.5x15.8x20.5	60 132
ABB 678	400/50/3	2030430000	650	23	39	10	145	5,5	4	AB 678	2/2	1000	760x400x590 29.5x15.8x23.2	70 154
ABB 858	400/50/3	2030450000	830	29.3	50	10	145	7,5	5,5	AB 858	2/2	1280	840x430x590 33.1x16.9x23.2	75 165
ABB 998	400/50/3	2030490000	1070	37.8	64,2	10	145	10	7,5	AB 998	2/2	1270	840x430x590 33.1x16.9x23.2	77 170
ABB 1000	400/50/3	2030710000	1050	37.8	63	10	145	10	7,5	AB 1000	2/2	1080	1050x460x660 41.3x18.1x26.0	95 209

### Staffa / Bracket



Descrizione / Description	Type	Cod.
Staffa di posizionamento a terra per basamento ABB Floor positioning bracket for ABB base	ABB 268 - 360 - 415 - 510	7518120000
	ABB 498 - 598 - 678 - 858 - 998 - 1000	7518080000

#### Disponibili con avviamento stella triangolo / Available with automatic star-delta starter

### EBS



Type	Volt/Hz	Cod.	Flow		Pressure		Power		Grup./ Pump	Cil./St.	min-1	LxPxH		kg lb
			l/min	CFM	m³/h	bar	psi	HP				kW	mm	
EBS 678	400/50/3	2030570000	650	23	39	10	145	5,5	4	AB 678	2/2	1000	750x400x590 29.6x15.8x23.2	70 154
EBS 958	400/50/3	2030600000	830	29.3	49,8	10	145	7,5	5,5	AB 958	2/2	980	890x456x730 35x17.9x28.7	75 165
EBS 998	400/50/3	2030700000	1070	37.8	64,2	10	145	10	7,5	AB 998	2/2	1270	890x456x730 35x17.9x28.7	77 170
EBS 1000	400/50/3	2032010000	1050	37.8	63	10	145	10	7,5	AB 1000	2/2	1080	1050x460x660 41.3x18.1x26	95 210
EBS 1500	400/50/3	2032020000	1400	49.5	84	10	145	15	11	AB 1500	2/2	1400	1050x460x660 41.3x18.1x26	95 210